



MONTHLY MEMBERSHIP PROGRESS REPORT

District 60 B

Results as of: 6/30/2017

GMT: OPEN

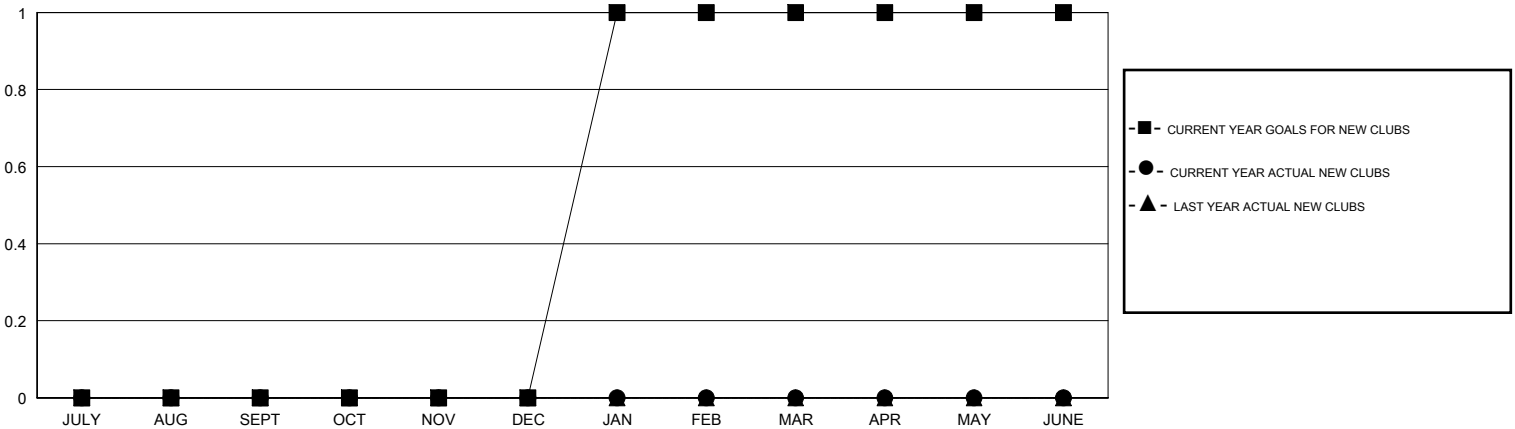
LOCATION JAMAICA

GMT CA

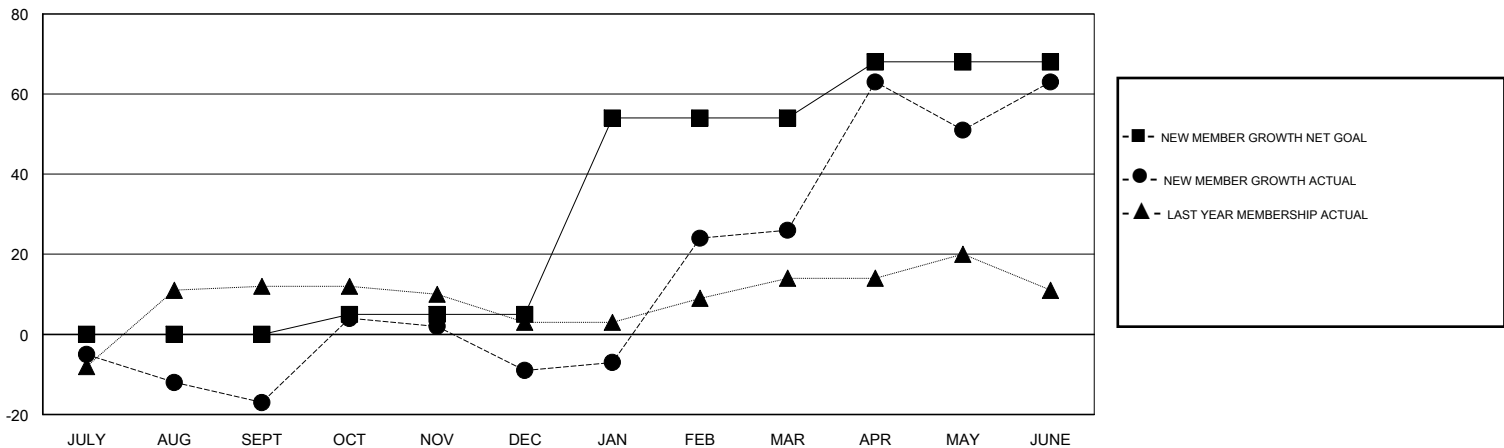
Clubs			
RESULTS FOR 2016-2017			
QUARTER	NEW CLUB GOAL	NEW CLUBS	DROPPED CLUBS
JULY/AUG/SEPT	0	0	0
OCT/NOV/DEC	0	0	0
JAN/FEB/MAR	1	0	0
APR/MAY/JUNE	0	0	0

Members			
RESULTS FOR 2016-2017			
QUARTER	NEW MEMBER GROWTH NET GOAL (not reinstated or transfers)	NEW MEMBER GROWTH ACTUAL (not reinstated or transfers)	DROPPED MEMBERS ACTUAL (including transfers)
JULY/AUG/SEPT	0	18	35
OCT/NOV/DEC	5	33	25
JAN/FEB/MAR	49	52	17
APR/MAY/JUNE	14	78	41

GOALS AND ACTUAL NEW CLUBS CUMULATIVE



GOALS AND ACTUAL MEMBERS CUMULATIVE



DROPPED CLUBS: 0	44 CLUBS OF 59 ADDED 1 OR MORE NEW MEMBERS	<u>GENDER DISTRIBUTION</u>	
DROPPED MEMBERS		MALE	820 (43.00%)
DECEASED	20	FEMALE	1,087 (57.00%)
CLUB CANCELLED	0	TOTAL FAMILY UNIT MEMBERS	
OTHER	98	66	
TOTAL	118	FAMILY MEMBERS PAYING HALF DUES	
		35	

[CLICK HERE FOR CUMULATIVE MEMBERSHIP DATA](#)